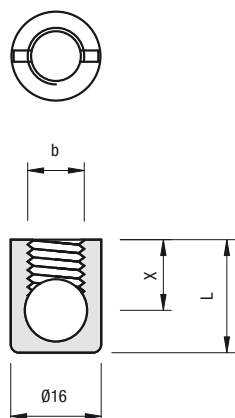


## Barilotto Ø 16 senza bordo

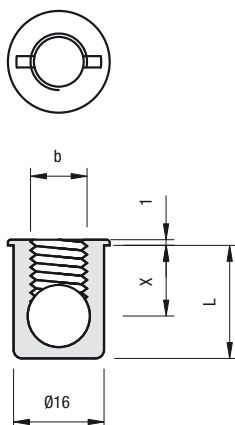
## Housing Ø 16 wo/rim



	ART.	∅	X	b	L		
Zama	<b>301</b>	22	16	11	10MA	19,5	2.000
	<b>302</b>	24-25	16	12	10MA	20,5	2.000
	<b>303</b>	26-28	16	13	10MA	21,5	2.000

## Barilotto Ø 16 con bordo

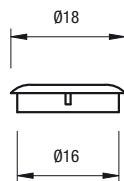
## Housing Ø 16 w/rim



	ART.	∅	X	b	L		
Zama	<b>311</b>	22	16	11	10MA	19,5	2.000
	<b>312</b>	24-25	16	12	10MA	20,5	2.000
	<b>313</b>	26-28	16	13	10MA	21,5	2.000
	<b>315</b>	30	16	15	10MA	23,5	1.000

## Copri barilotto Ø 16

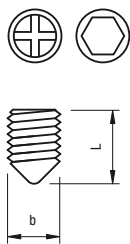
## Cover cap Ø 16



	ART.	∅ EX	∅ IN	L	Colore / Colour	
Nylon	<b>371</b>	18	16	3,5	A richiesta / On request	10.000

## Grano 10MA

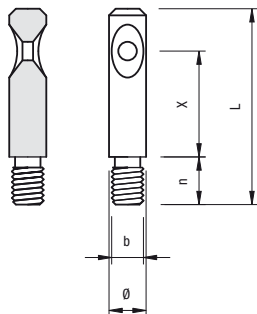
## Conic screw 10MA



	ART.	L	b		
Zama	<b>361</b>	11	10MA		4.000
Acciaio	<b>362</b>	12	10MA		4.000
	<b>363</b>	14	10MA		4.000
	<b>364</b>	16	10MA		4.000

## Astina Ø 10

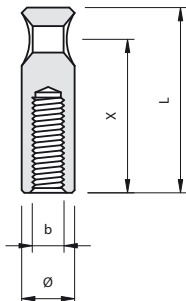
## Pin Ø 10



	ART.	Ø	L	b	X		
Acciaio	<b>321</b>	10	36	6MA	20	1.000	
	<b>322</b>	10	36	8MA	20	1.000	
	<b>323</b>	10	36	7/16	20	1.000	
	<b>331</b>	10	41	6MA	25	1.000	
	<b>332</b>	10	41	8MA	25	1.000	
	<b>333</b>	10	41	7/16	25	1.000	
	<b>341</b>	10	46	6MA	30	1.000	
	<b>342</b>	10	46	8MA	30	1.000	
	<b>344</b>	10	55	8MA	35	500	
	<b>345</b>	10	55	8MA	38	500	
			10	A disegno / On drawing			

## Astina femmina Ø 10

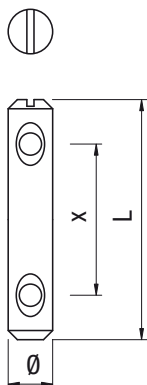
## Female pin Ø 10



	ART.	Ø	L	b	X	
Acciaio	<b>391</b>	10	33	6MA	27	500
	<b>392</b>	10	41	6MA	31	500
	<b>393</b>	10	44	6MA	37	500
			10	A disegno / On drawing		

## Astina 2 fori Ø 10

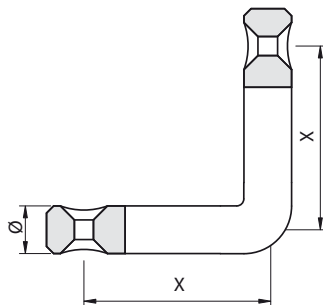
## Pin 2 holes Ø 10



ART.	Ø	L	X	
<b>495</b>	10	80	60	500
	10	A disegno / On drawing		

## Astina 2 fori 90° Ø 10

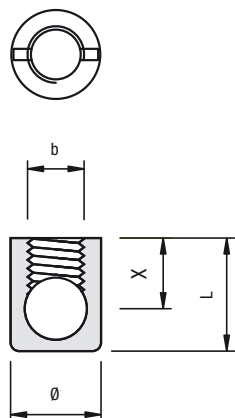
## Pin 2 holes 90° Ø 10



ART.	Ø	X	
<b>520</b>	10	65	200
	10	A disegno / On drawing	

## Barilotto Mignon Ø vari

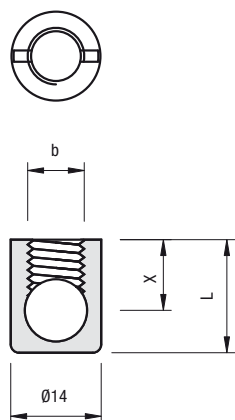
## Housing Mignon Ø differents



	ART.		Ø	L	b	X	
Acciaio	<b>1151</b>	18	12	14	8MA	9	2.000
	<b>1152</b>	20	12	15	8MA	10	2.000
	<b>1153</b>	22	12	18	8MA	11	2.000
	<b>1154</b>	25	12	21	8MA	12,5	2.000
			12	A disegno / On drawing			
Acciaio	<b>1161</b>	18	14	14	8MA	9	2.000
			14	A disegno / On drawing			
Acciaio	<b>1171</b>	25	15	21	10MA	12,5	1.000
	<b>1172</b>	30	15	24	10MA	15	1.000
			15	A disegno / On drawing			

## Barilotto Ø 14 senza bordo

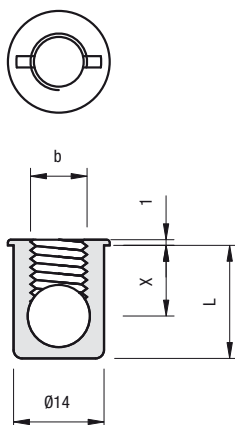
## Housing Ø 14 wo/rim



	ART.	∅	X	b	L		
Zama	<b>401</b>	16	14	8	8MA	14	2.000
	<b>402</b>	18	14	9	8MA	15	2.000
	<b>403</b>	20	14	10	8MA	16	2.000
	<b>404</b>	22	14	11	8MA	17	2.000
	<b>405</b>	25	14	12,5	8MA	19	2.000
	<b>411</b>	16	14	8	8P1	14	2.000
	<b>412</b>	18	14	9	8P1	15	2.000
	<b>413</b>	20	14	10	8P1	16	2.000

## Barilotto Ø 14 con bordo

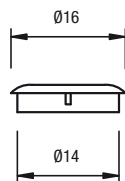
## Housing Ø 14 w/rim



	ART.	∅	X	b	L		
Zama	<b>421</b>	16	14	8	8MA	14	2.000
	<b>422</b>	18	14	9	8MA	15	2.000
	<b>423</b>	20	14	10	8MA	16	2.000
	<b>424</b>	22	14	11	8MA	17	2.000
	<b>425</b>	25	14	12,5	8MA	19	2.000
	<b>428</b>	28/30	14	15	8MA	20,5	1.000
	<b>431</b>	16	14	8	8P1	14	2.000
	<b>432</b>	18	14	9	8P1	15	2.000
	<b>433</b>	20	14	10	8P1	16	2.000

## Copri barilotto Ø 14

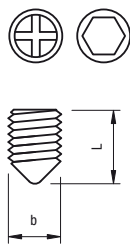
## Cover cap Ø 14



	ART.	∅ EX	∅ IN	L	Colore / Colour	
Nylon	<b>456</b>	16	14	3,5	A richiesta / On request	10.000

## Grano 8MA / 8P1

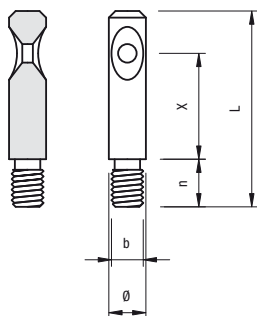
## Conic screw 8MA / 8P1



	ART.	L	b		
Zama	<b>439</b>	9	8MA		10.000
	<b>440</b>	11	8MA		10.000
	<b>441</b>	15	8MA		5.000
	<b>442</b>	11	8MA		10.000
	<b>450</b>	11	8P1		10.000
	<b>451</b>	8	8P1		10.000
Acciaio	<b>447</b>	10	8MA	EX 4	10.000
	<b>448</b>	12	8MA	EX 4	10.000

## Astina Ø 7 - Ø 7,5

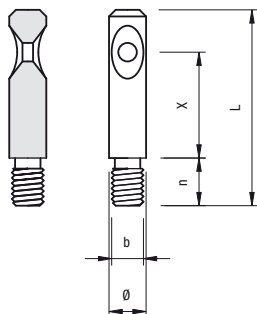
## Pin Ø 7 - Ø 7,5



	ART.	Ø	L	b	X		
Acciaio	<b>461</b>	7	35	6MA	18,5	2.000	
	<b>462</b>	7	35	6MA	20	2.000	
	<b>463</b>	7	39	FL6	20	2.000	
	<b>464</b>	7	45	6MA	30	2.000	
	<b>465</b>	7	45	6MA	28	2.000	
	<b>466</b>	7	60	6MA	44	1.000	
	<b>467</b>	7	70	6MA	54	1.000	
		7	A disegno / On drawing				
	Acciaio	<b>468</b>	7,5	34	6MA	20	2.000
		<b>469</b>	7,5	36	6MA	20	2.000
		7,5	A disegno / On drawing				

## Astina Ø 8

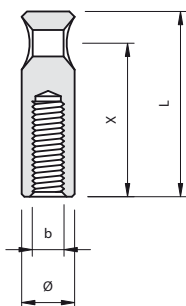
## Pin Ø 8



	ART.	Ø	L	b	X	
Acciaio	<b>473</b>	8	35	8MA	20	2.000
	<b>472</b>	8	46	8MA	30	1.000
		8	A disegno / On drawing			

## Astina femmina Ø 7 - Ø 8

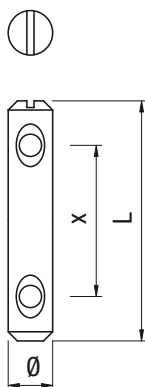
## Female Pin Ø 7 - Ø 8



	ART.	Ø	L	b	X	
Acciaio	<b>530</b>	7	27	4MA	18,5	2.000
		7	A disegno / On drawing			
	<b>540</b>	8	38	4MA	30	2.000
		8	A disegno / On drawing			

## Astina 2 fori Ø 7 - Ø 8

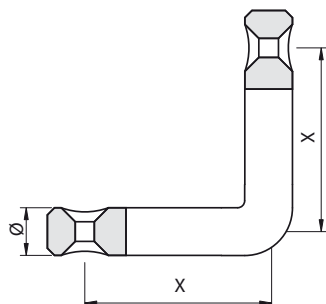
## Pin 2 holes Ø 7 - Ø 8



	ART.	Ø	L	X	
Acciaio	<b>482</b>	7	52	32	1.000
	<b>485</b>	7	52	36	1.000
	<b>484</b>	7	52	37	1.000
	<b>486</b>	7	52	38	1.000
	<b>487</b>	7	60	40	1.000
	<b>488</b>	7	62	42	1.000
	<b>483</b>	7	70	56	1.000
	<b>489</b>	7	75	58	1.000
		7	A disegno / On drawing		
	<b>480</b>	8	60	40	1.000
		8	A disegno / On drawing		

## Astina 2 fori 90° Ø 7 - Ø 8

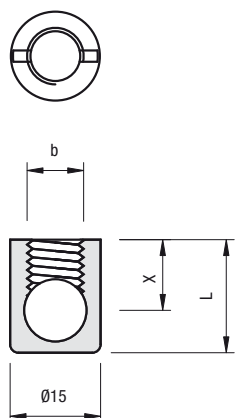
## Pin 2 holes 90° Ø 7 - Ø 8



	ART.	Ø	X	b	
Acciaio	<b>500</b>	7	31	fissa 90°	500
	<b>501</b>	7	37	snodata 45° - 180°	500
		7	A disegno / On drawing		
	<b>510</b>	8	64	fissa 90°	200
		8	A disegno / On drawing		

## Barilotto Ø 15 senza bordo

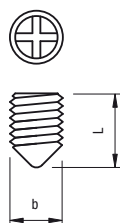
Housing Ø 15 wo/rim



	ART.	$\nabla$	Ø	X	b	L	
Zama	<b>406</b>	16	15	8	8MA	14	2.000
	<b>407</b>	18	15	9	8MA	15	2.000
	<b>416</b>	16	15	8	8P1	14	2.000
	<b>417</b>	18	15	9	8P1	15	2.000

## Grano 8MA / 8P1

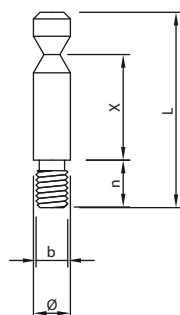
Conic screw 8MA / 8P1



	ART.	L	b		
Zama	<b>444</b>	8	8MA		10.000
	<b>452</b>	8	8P1		10.000

## Astina Ø 7 Speciale

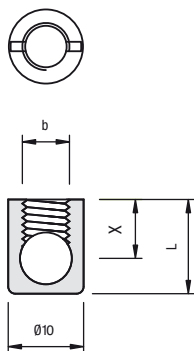
Special Pin Ø 7



	ART.	Ø	L	b	X	
Acciaio	<b>381</b>	7	40	6MA	24	1.000
	<b>382</b>	7	43	FL6	24	1.000
	<b>383</b>	7	50	6MA	34	1.000
	<b>384</b>	7	53	FL6	34	1.000

## Barilotto Mignon Ø 10

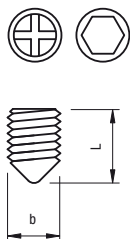
## Housing Mignon Ø 10



	ART.	$\nabla$	Ø	L	b	X		
Acciaio	<b>1131</b>	14	10	12	6MA	7	5.000	
	<b>1132</b>	16	10	13	6MA	8	5.000	
	<b>1133</b>	18	10	14	6MA	9	5.000	
	<b>1134</b>	20	10	15	6MA	10	4.000	
	<b>1135</b>	22	10	17	6MA	11	3.000	
	<b>1136</b>	24	10	18	6MA	12	2.000	
	<b>1137</b>	28	10	21	6MA	14	2.000	
	<b>1138</b>	30	10	22	6MA	15	2.000	
		10	A disegno / On drawing					

## Grano acciaio 6MA

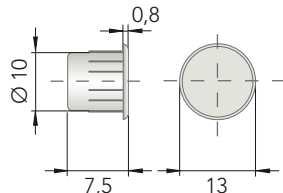
## Steel conic screw 6MA



	ART.	L	b		
Acciaio	<b>1141</b>	7	6MA		5.000
	<b>1142</b>	9	6MA		5.000
	<b>1143</b>	11	6MA		5.000
	<b>1144</b>	14	6MA		5.000
	<b>1145</b>	8	6MA	EX 3	5.000

## Copri barilotto Ø 10

## Cover cap Ø 10

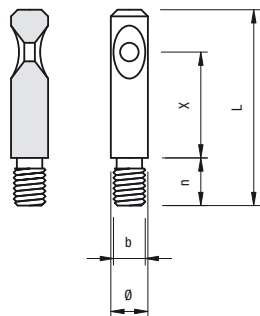



	ART.	Ø EX	Ø IN	L	Colore / Colour	
Nylon	<b>5335</b>	13	10	7,5	A richiesta / On request	10.000



## Astina Ø 7

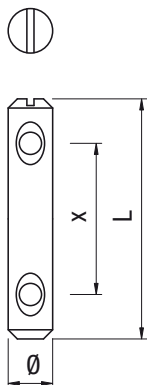
Pin Ø 7




	ART.	Ø	L	b	X	n	
Acciaio	<b>461</b>	7	35	6MA	18,5	8	2.000
	<b>462</b>	7	35	6MA	20	8	2.000
	<b>463</b>	7	39	FL6	20	11	2.000
	<b>464</b>	7	45	6MA	30	8	2.000
	<b>465</b>	7	45	6MA	28	8	2.000
	<b>466</b>	7	60	6MA	44	8	1.000
	<b>467</b>	7	70	6MA	54	8	1.000
	7	A disegno / On drawing					

## Astina 2 fori Ø 7

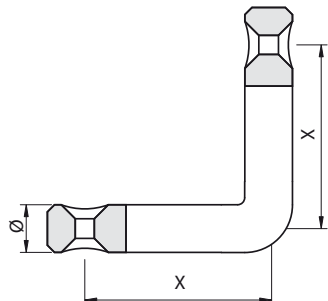
Pin 2 holes Ø 7




	ART.	Ø	L	X	
Acciaio	<b>482</b>	7	52	32	1.000
	<b>485</b>	7	52	36	1.000
	<b>484</b>	7	52	37	1.000
	<b>486</b>	7	52	38	1.000
	<b>487</b>	7	60	40	1.000
	<b>488</b>	7	62	42	1.000
	<b>483</b>	7	70	56	1.000
	<b>489</b>	7	75	58	1.000
		7	A disegno / On drawing		

## Astina 2 fori 90° Ø 7

Pin 2 holes 90° Ø 7



	ART.	Ø	X	b	
Acciaio	<b>500</b>	7	31	fissa 90°	500
	<b>501</b>	7	37	snodata 45° - 180°	500
	7	A disegno / On drawing			